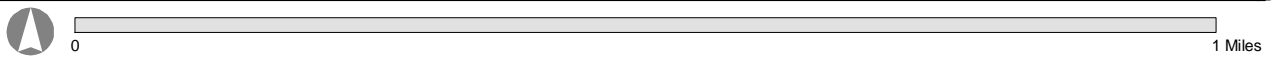
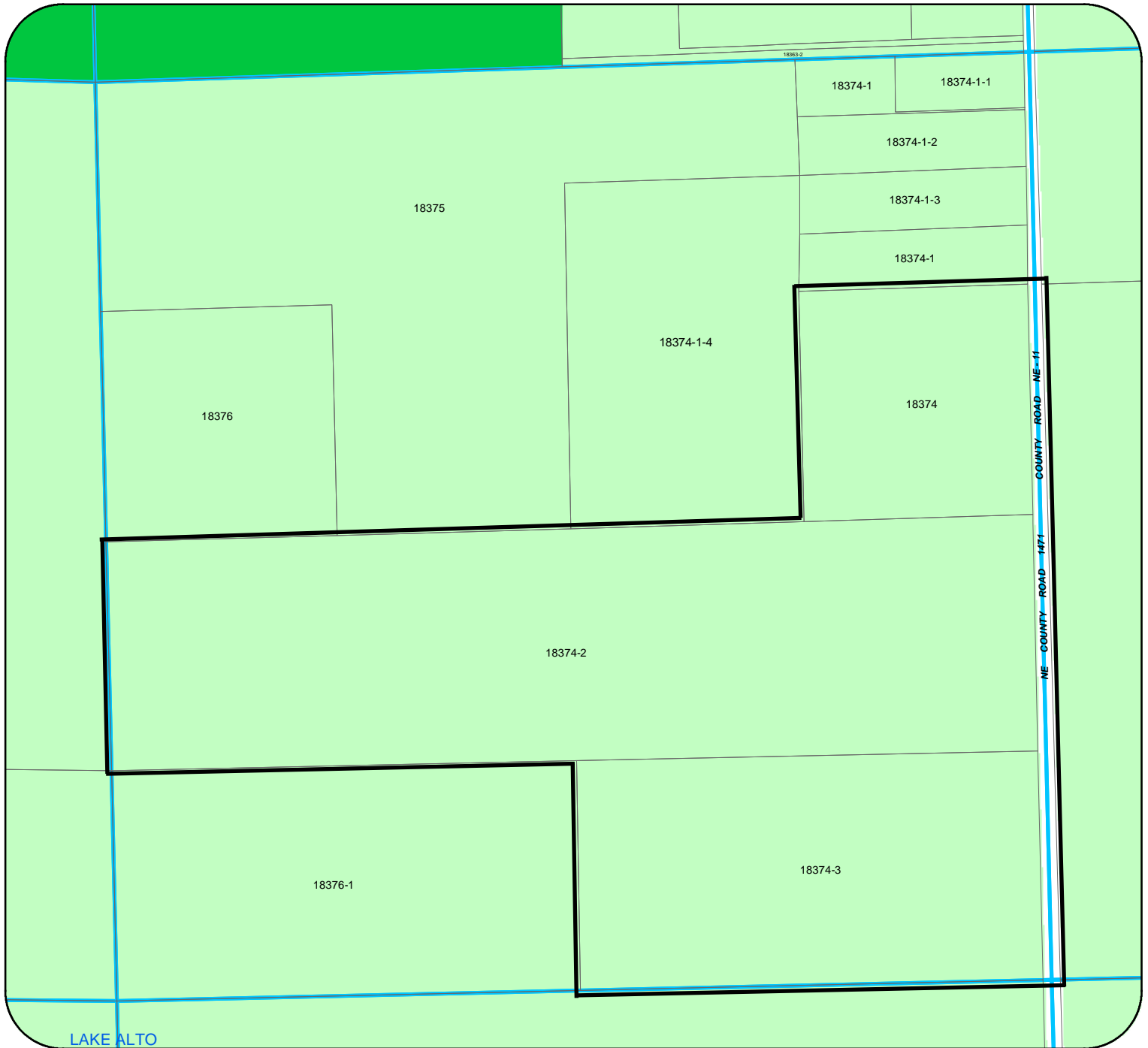


Prepared by: Alachua County Department of Growth Management, 10 SW 2nd Avenue, Gainesville, FL 32601, (352) 374-5249, Date: Mar 07, 2006



- Section Line
- City Limit Line
- Pulled from Admin Rezoning
- Resolutions before 1982
- ZOM (Rezoning)
- ZON (Non-Conforming Use)
- ZOR (Revocation)
- ZOS (Special Use Permit)
- ZOT (Temporary Use Permit)
- ZOZ (Special Exception)

County Zoning

- (A) Agricultural
- (A-RB) Agricultural-Rural Business
- (AP) Administrative/Professional
- (BA) Automotive Oriented Business
- (BA-1) Automotive Oriented Business
- (BH) Highway Oriented Business
- (BP) Business/Professional
- (BR) Business, Retail Sales/Service
- (BR-1) Business, Retail Sales/Service

- (BW) Wholesale/Warehousing
- (C-1) Conservation
- (HM) Hospital/Medical
- (MB) Business, Marine
- (ML) Light Industrial
- (MP) Manufacturing/Processing
- (MS) Manufacturing/Services
- (PD) Planned Development
- (R-1A) Single Family Residential
- (R-1AA) Single Family Residential

- (R-1B) Single Family Residential
- (R-1C) Single Family Residential
- (R-2) Multi-family Residential
- (R-2A) Multi-family Residential
- (R-3) Multi-family Residential
- (RE) Residential-Estate
- (RE-1) Residential-Estate
- (RM) Manuf./ Mobile Home Park
- (RM-1) Travel Trailer Park
- (RP) Residential/Professional