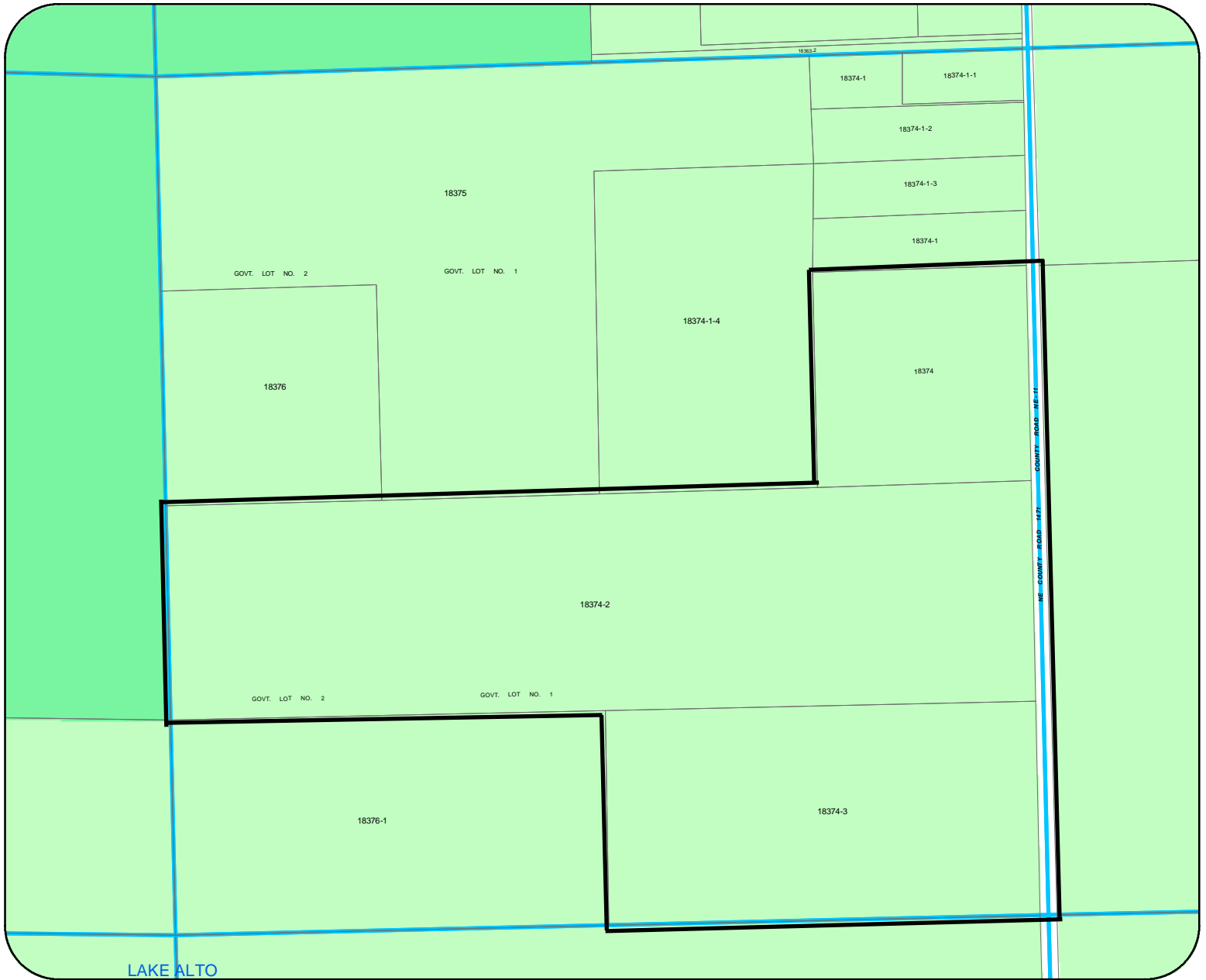


Prepared by: Alachua County Department of Growth Management, 10 SW 2nd Avenue, Gainesville, FL 32601, (352) 374-5249, Date: Apr 13, 2006



### Legend:

- Open Water
- Section Line
- Activity Center
- Special Area Study
- Urban Services Line
- City Limit Line
- Urban Cluster Line

### County Future Land Use 2020

- |                                      |                                   |                                    |
|--------------------------------------|-----------------------------------|------------------------------------|
| Commercial                           | Low Density Residential           | Conservation                       |
| Commercial Enclaves                  | Medium Density Residential        | County Solid Waste Manag. Facility |
| Rural Commercial Agriculture         | Medium High Density Residential   | Office                             |
| Shopping Center                      | High Density Residential          | Office/Business Park               |
| Mixed Use Commercial                 | Residential 0-2 DU/acre           | Office/Medical                     |
| Mixed Use                            | Residential 2-4 DU/acre           | Office/Residential                 |
| Mixed Use Medium Density Residential | Rural Employment Center           | Office/Residential (2-4)           |
| Tourist/Entertainment                | Rural Community Employment Center | Office/Residential (4-8)           |
| Institutional                        | Rural Cluster                     | Warehouse/Distribution             |
| Light Industrial                     | Open Space                        | Utility                            |
| Heavy Industrial                     | Recreation                        | CCSAS Wetlands                     |
| Industrial/Manufacturing             | Rural/Agriculture                 | CCSAS Active Use Zone              |
| Estate Residential                   | Preservation                      | CCSAS Exceptional Upland Habitat   |
|                                      |                                   | CCSAS Hammock                      |